

The Urgency of Additional European Leadership about Climate Change

Jean-Pascal van Ypersele (UCL)

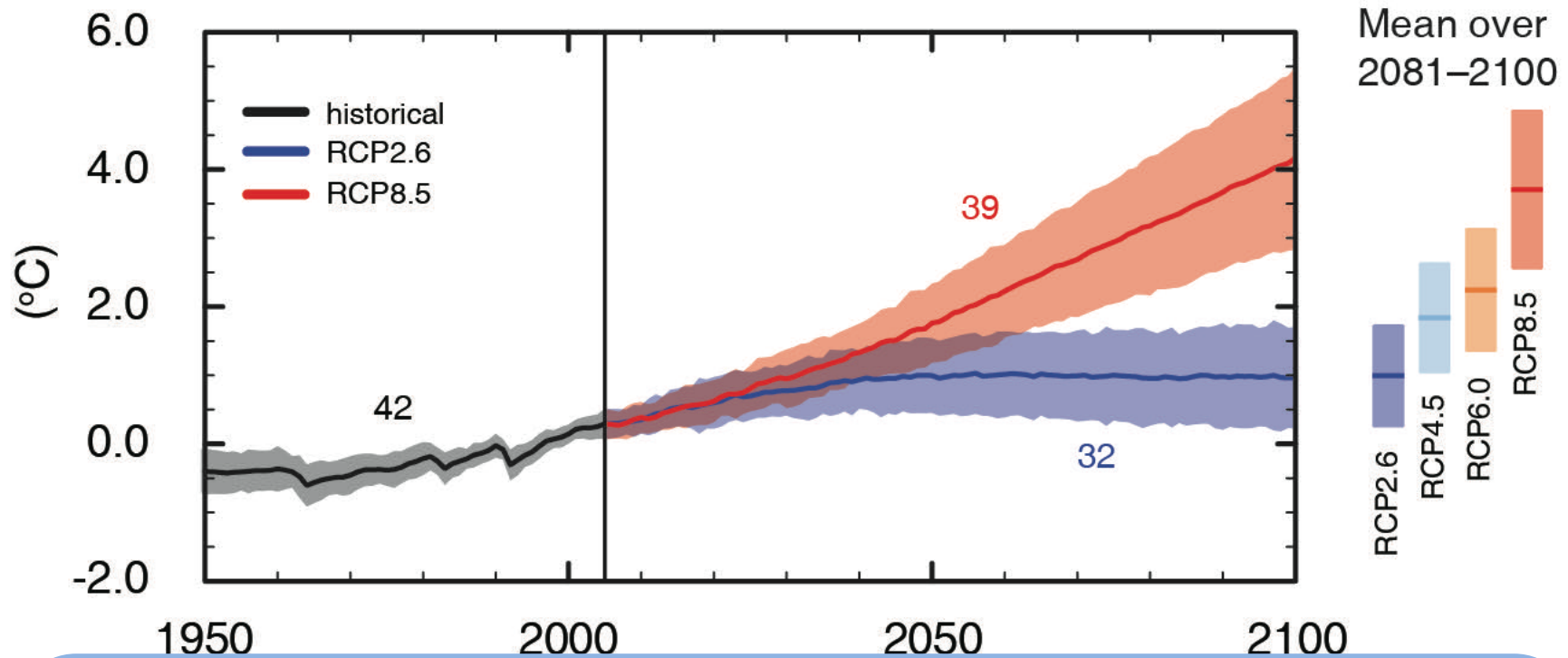
**Former IPCC Vice-Chair, Professor of
climate sciences at UCLouvain (Belgium)**

Twitter: @JPvanYpersele

**European Alliance to Save Energy,
Brussels, 18-9-2018**

**Thanks to the Walloon government (funding the Walloon Platform for IPCC,
see www.plateforme-wallonne-giec.be) for its support**

Global average surface temperature change (Ref: 1986-2005)



(IPCC 2013, Fig. SPM.7a)

Only the lowest (RCP2.6) scenario maintains the global surface temperature increase above the pre-industrial level to less than 2° C with at least 66% probability

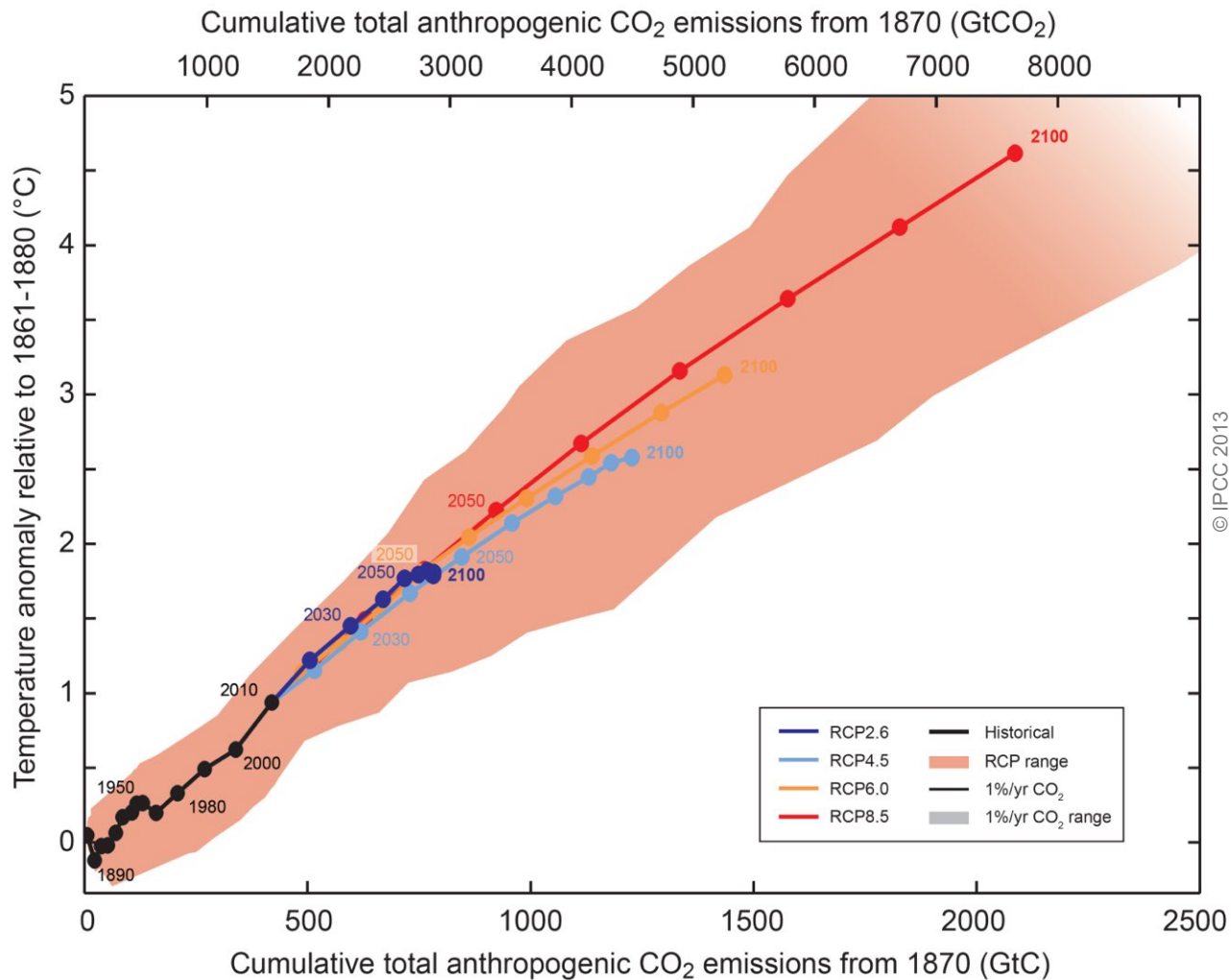


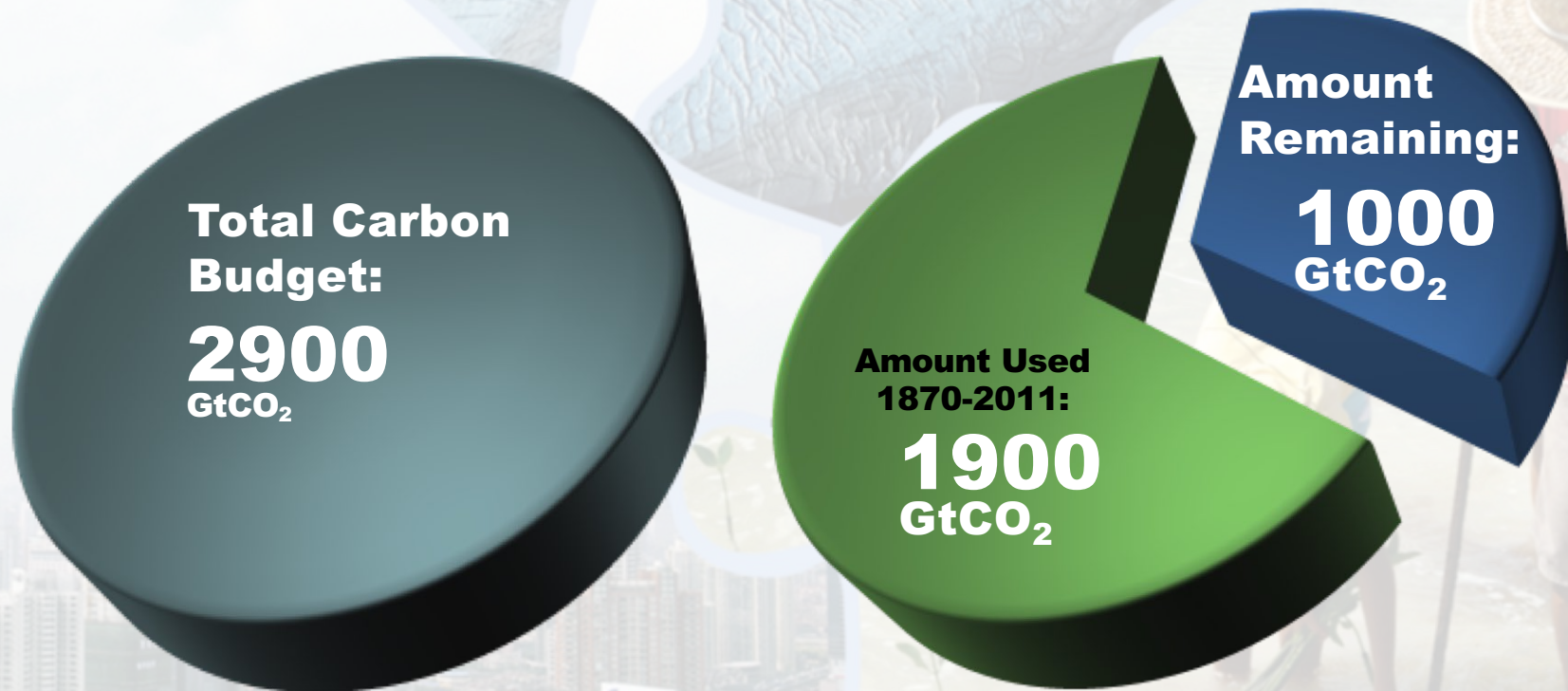
Fig. SPM.10

Limiting climate change will require substantial and sustained reductions of greenhouse gas emissions.

The window for action is rapidly closing

65% of the carbon budget compatible with a 2° C goal is already used

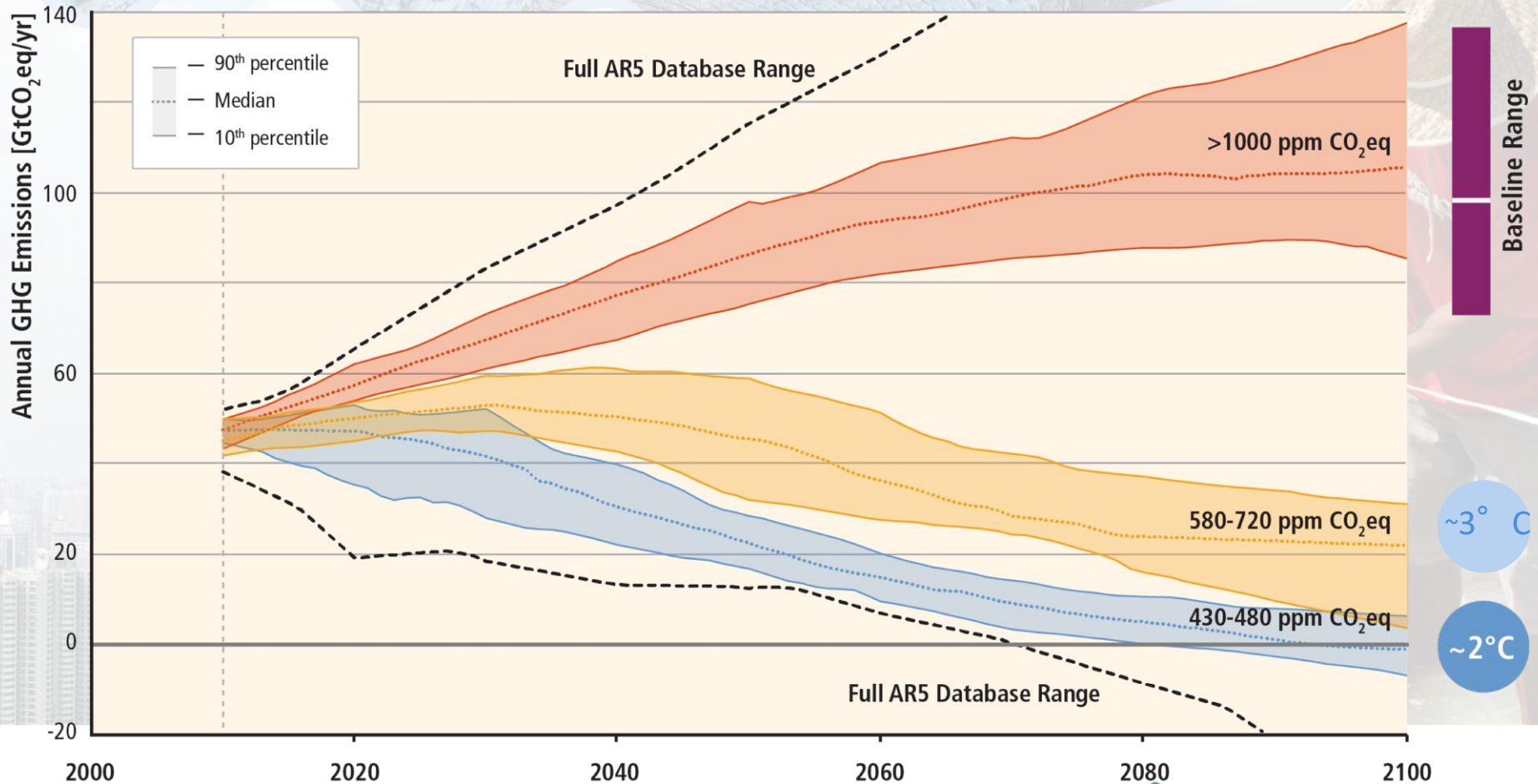
NB: this is with a probability greater than 66% to stay below 2° C



NB: Emissions in 2011: 38 GtCO₂/yr

AR5 WGI SPM

Stabilization of atmospheric concentrations requires moving away from the baseline – regardless of the mitigation goal.



Based on Figure 6.7

Key Mitigation Measures



More efficient use of energy



Much greater use of low-carbon and no-carbon energy



Improved carbon sinks (reduce deforestation, reforest, protect soil carbon)



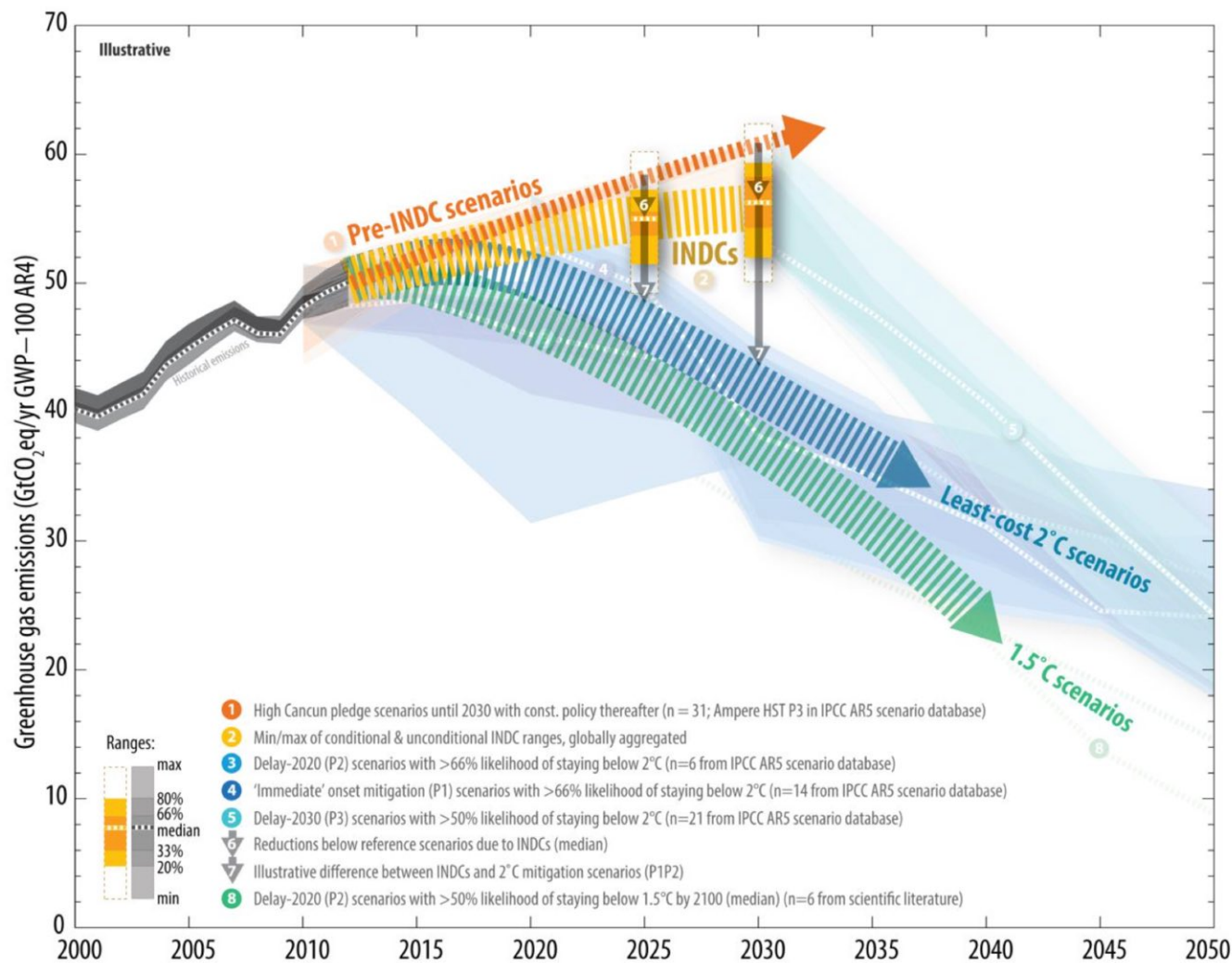
Lifestyle and behavioural changes

AR5 WGIII SPM

- **Substantial reductions in emissions to stay under 2° C would require large changes in investment patterns e.g., from 2010 to 2029, in billions US dollars/year:** (mean numbers rounded, IPCC AR5 WGIII Fig SPM 9)

- **energy efficiency: +330**
- **renewables: + 90**
- **power plants w/ CCS: + 40**
- **nuclear: + 40**
- **power plants w/o CCS: - 60**
- **fossil fuel extraction: - 120**

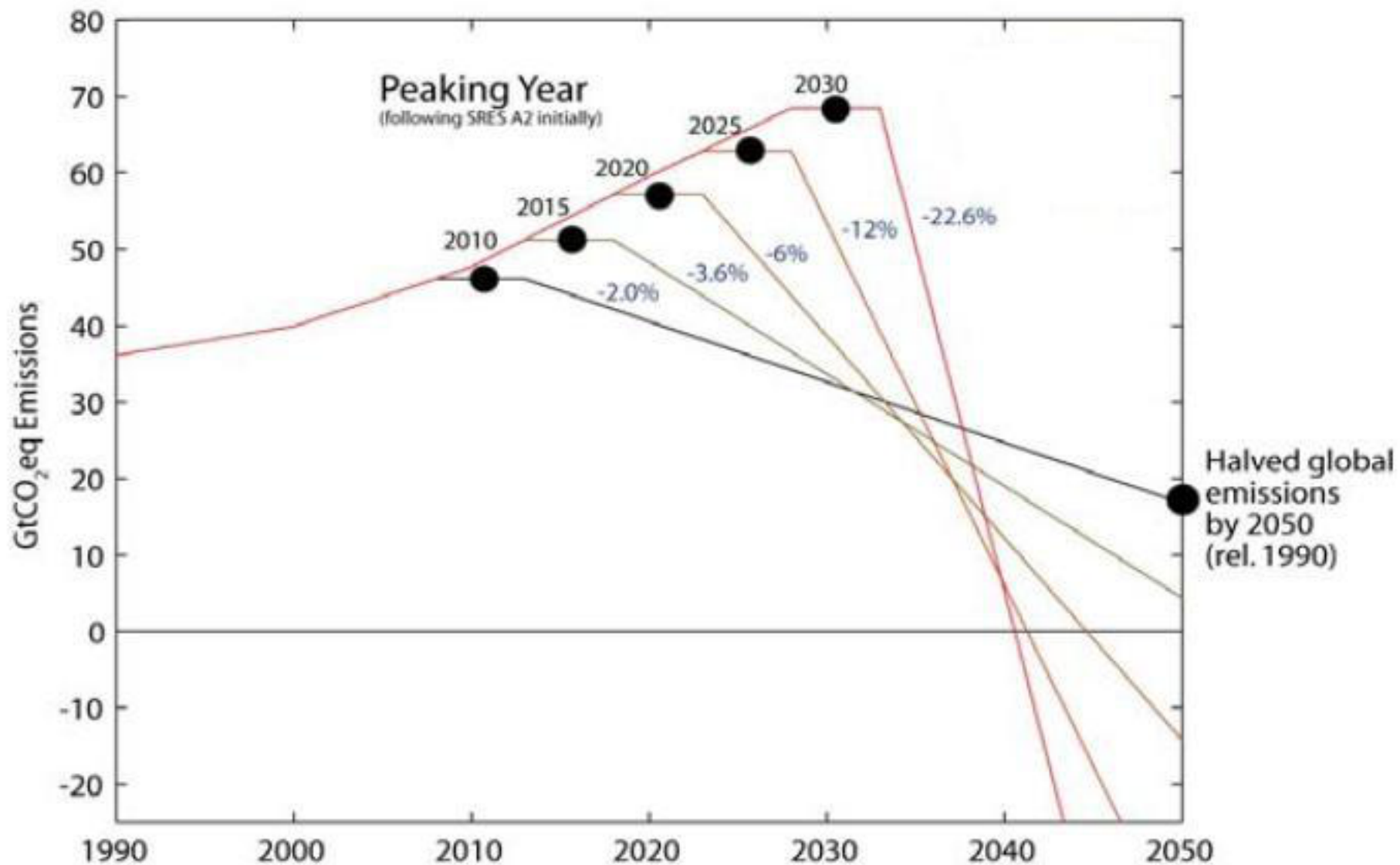
Comparison of global emission levels in 2025 and 2030 resulting from the implementation of the intended nationally determined contributions



UNFCCC, Aggregate effect of the intended nationally determined contributions: an update

<http://unfccc.int/resource/docs/2016/cop22/eng/02.pdf>

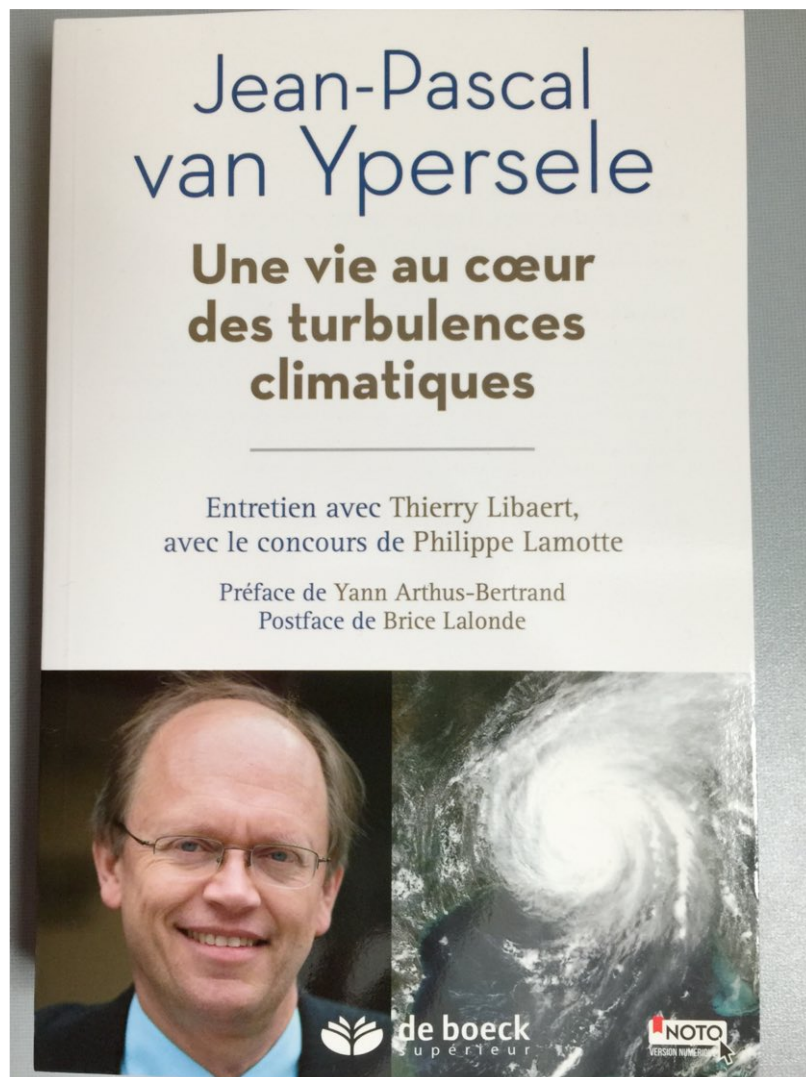
The more we wait, the more difficult it will be



Source: Meinshausen et al. - Nature, 30th April 2009

Pour en savoir plus:

**Publié chez De Boeck
supérieur,**



Bij EPO (2018)

**Voorwoord:
Jill Peeters**



Pour en savoir plus :

- www.ipcc.ch : GIEC ou IPCC
- www.climate.be/vanyp : beaucoup de mes dias
- www.plateforme-wallonne-giec.be : Plateforme wallonne pour le GIEC (e.a., Lettre d'information)
- www.my2050.be : calculateur de scénarios
- www.realclimate.org : réponses aux semeurs de doute
- www.skepticalscience.com : idem
- **Sur Twitter: @JPvanYpersele**
@IPCC_CH

Jean-Pascal van Ypersele
(vanyp@climate.be)